

2022

2012
2022

11

02
04
16
20

2022 1 1 2022 12 31

1

24

2

38

26
32
36

40
42
44

3

46

4

58

48
50
54

60
62
66

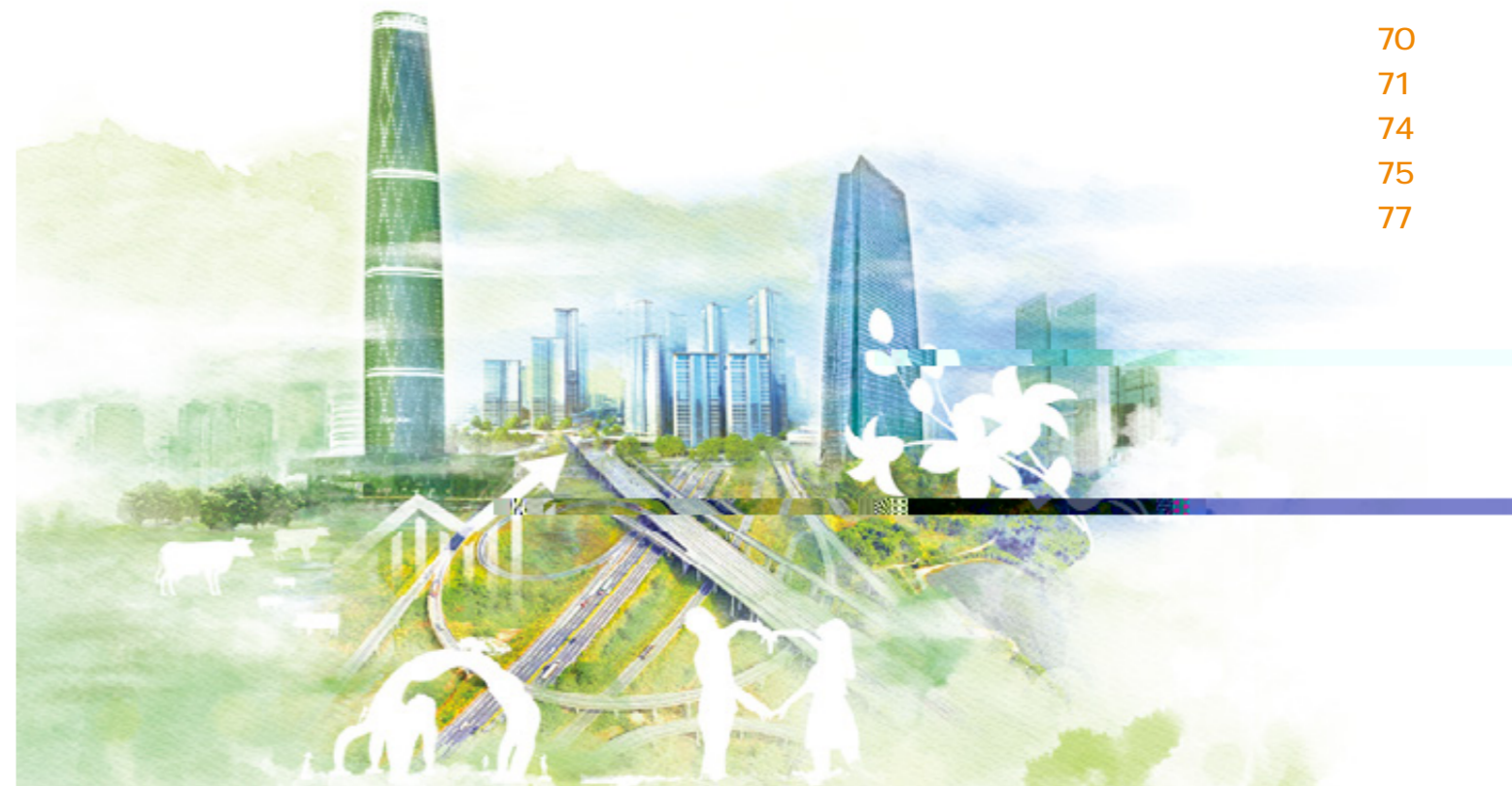
GRI

GRI Standards
CASS-CSR4.0

70
71
74
75
77

<http://www.yuexiu.com/shzr/shehuizerenbaogao/>

8620 88836888

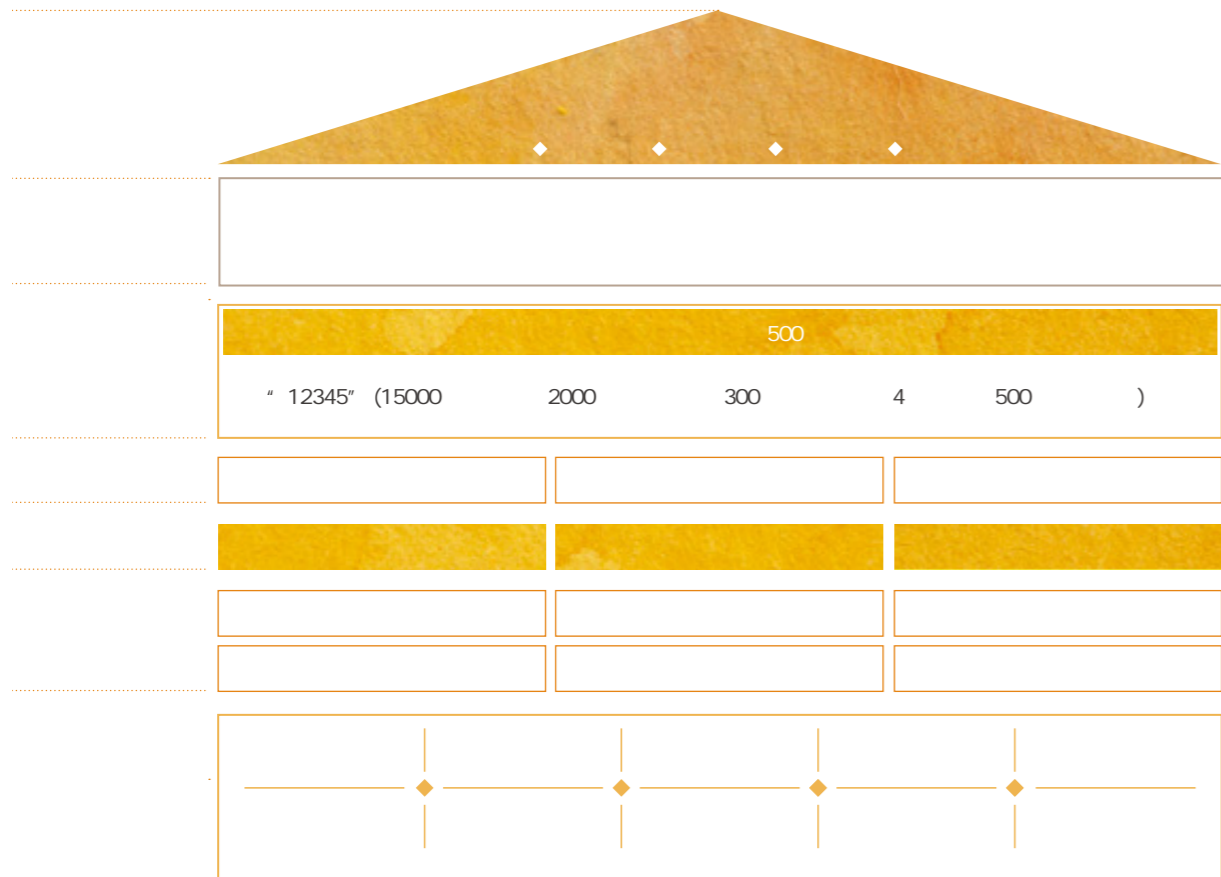


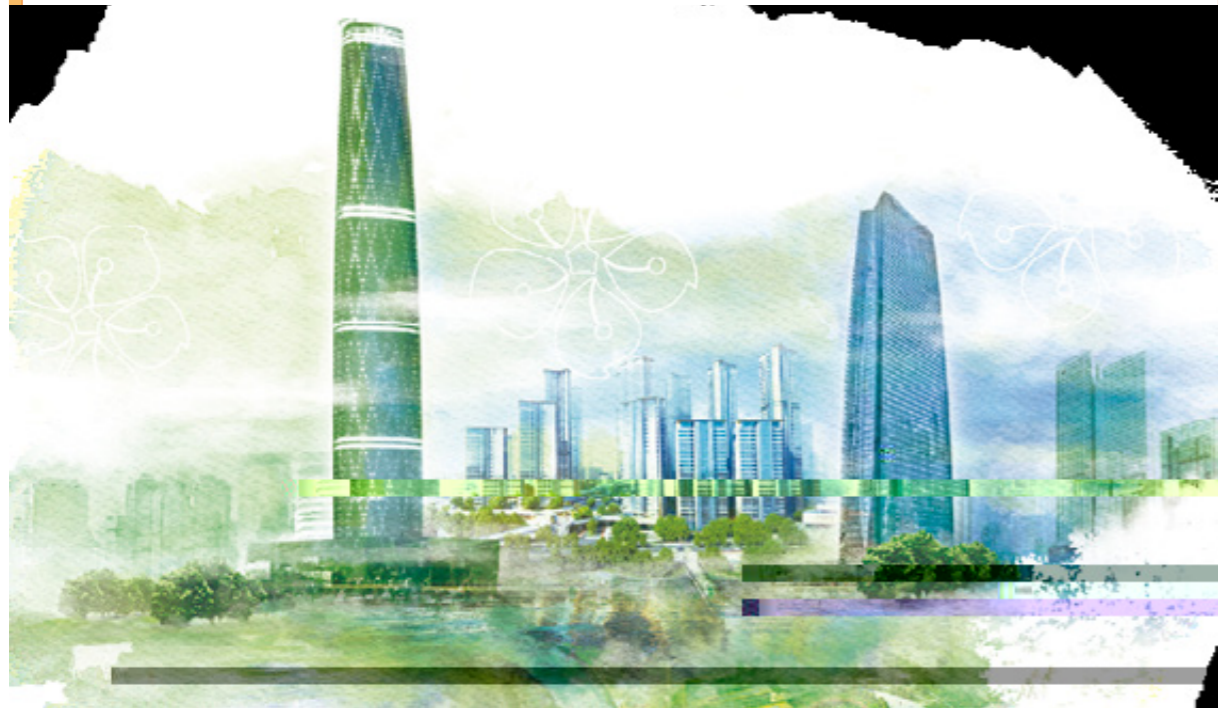
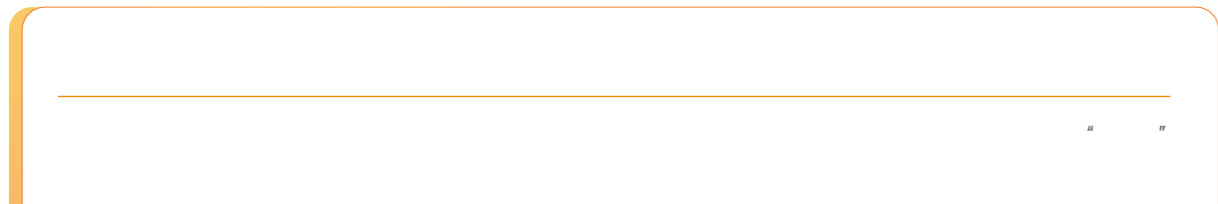
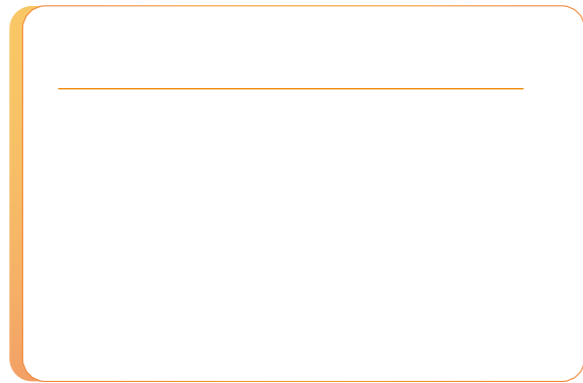
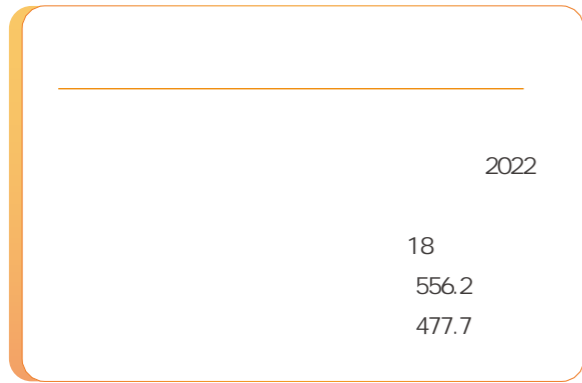
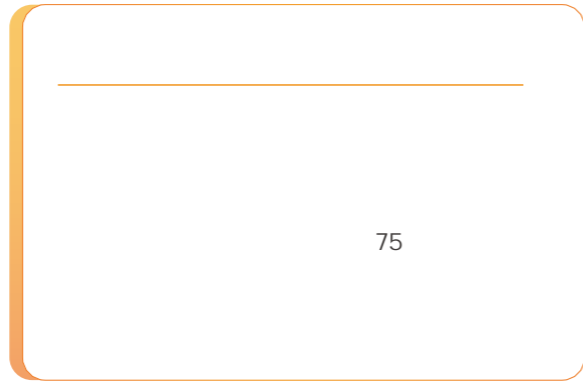
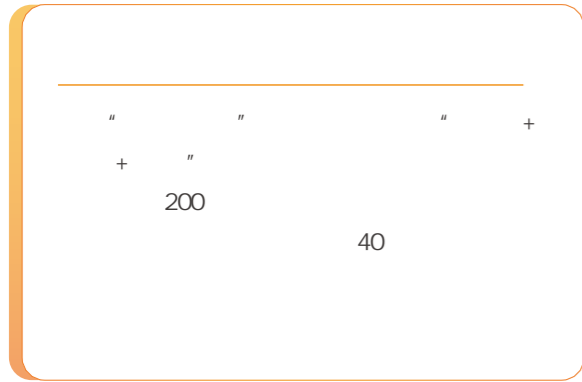
1985

38

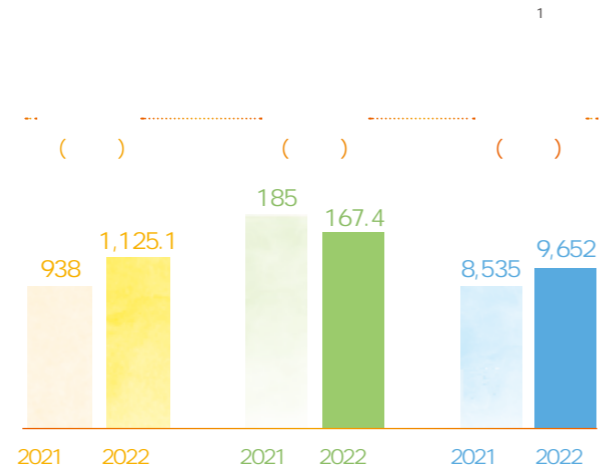
" 4+X"

" " REIT 6





2022

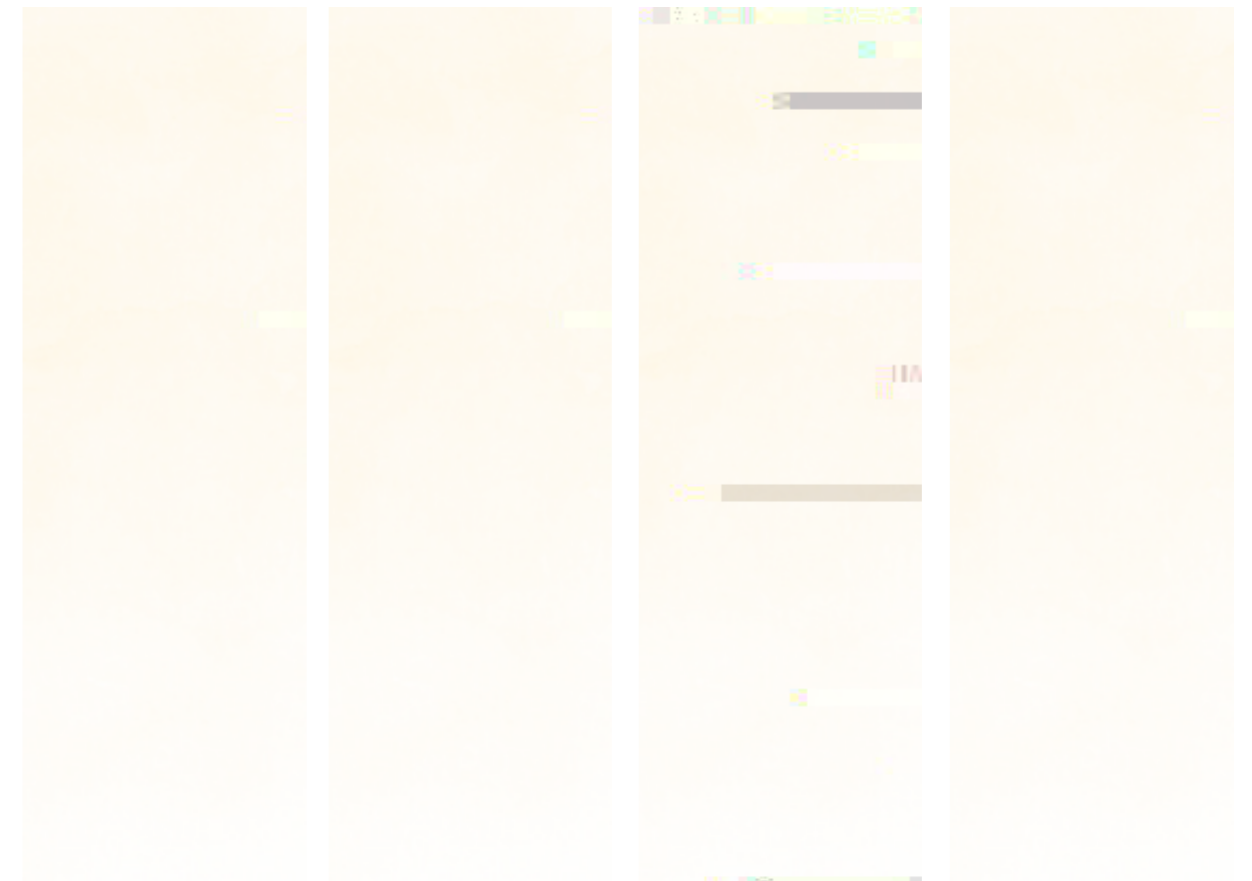


4



2022

2022



•	•	•
•		ESG
•	•	•
	•	

ESG

ESG

The image shows five horizontal bars, each with a decorative icon on the left side. The bars are light beige with a dotted border. The icons are as follows:

- Bar 1: A diamond-shaped icon containing a bar chart with three bars of increasing height.
- Bar 2: A diamond-shaped icon containing a single vertical bar.
- Bar 3: A diamond-shaped icon containing a single vertical bar.
- Bar 4: A diamond-shaped icon containing a single vertical bar.
- Bar 5: A diamond-shaped icon containing a single vertical bar.



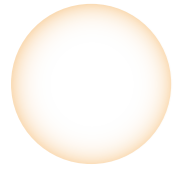
公

III



“ ”





" + "



2022

" - - "

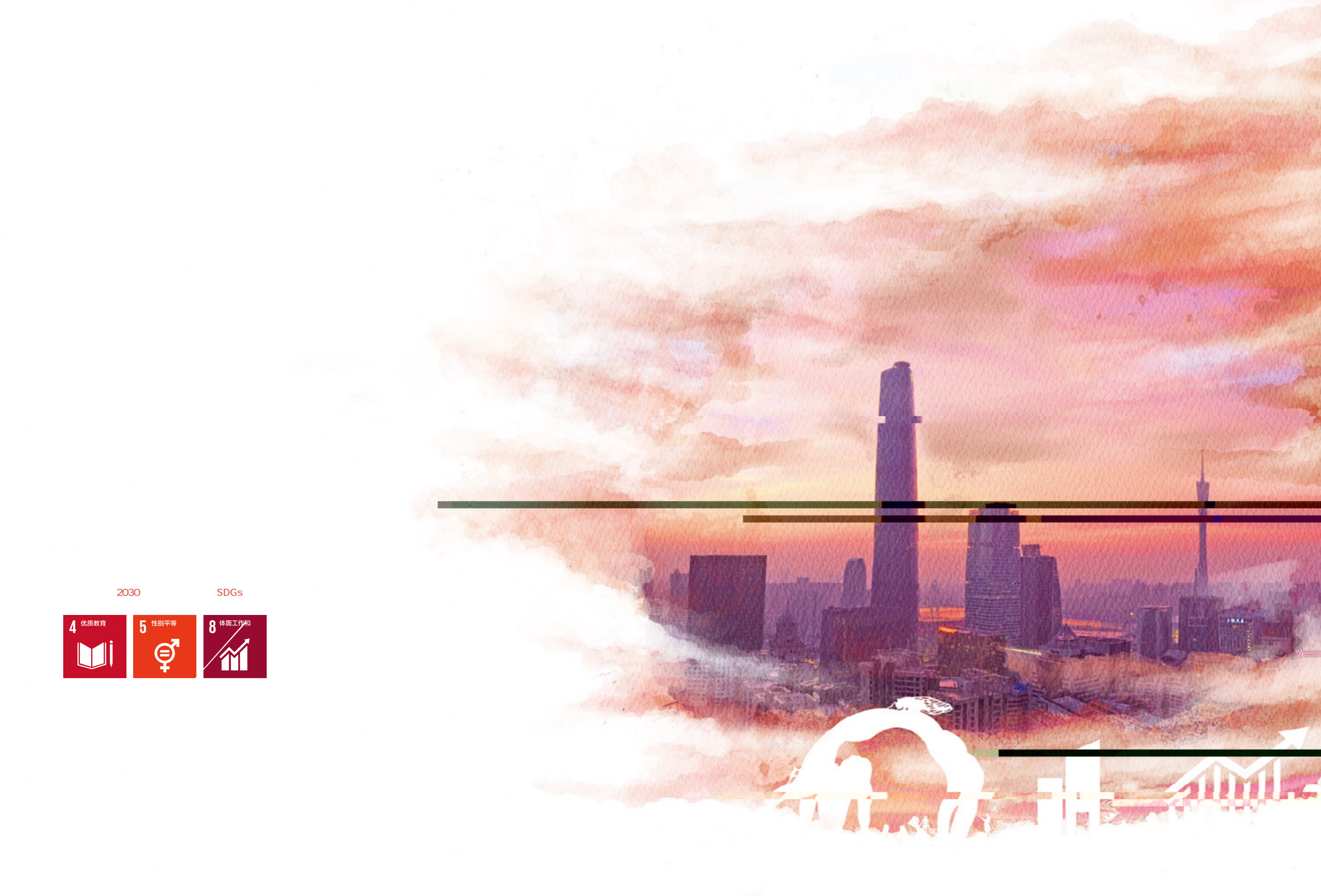
/					
/					

8 3 17.5 102
 7 1
 32
 108
 2022 8 3,000 10 6%





8	" "	8	" "	1.2	" "
—	" "	20			
300		1,000	1.43		2022
8	11	2022	" + "		
		8			



2030

SDGs



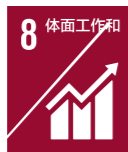
4

优质教育



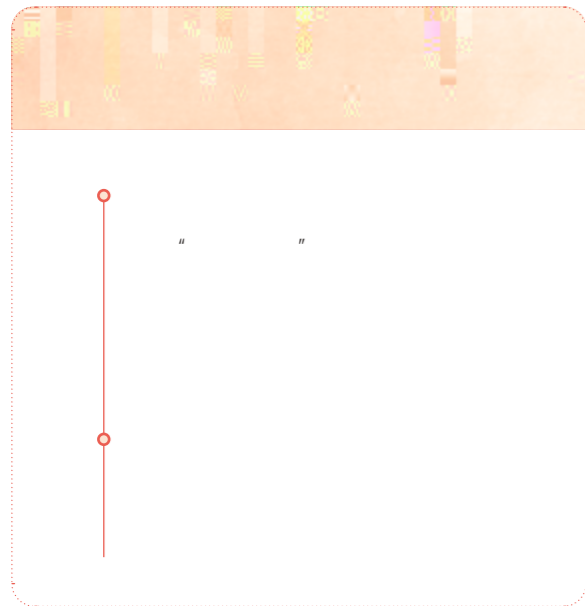
5

性别平等



8

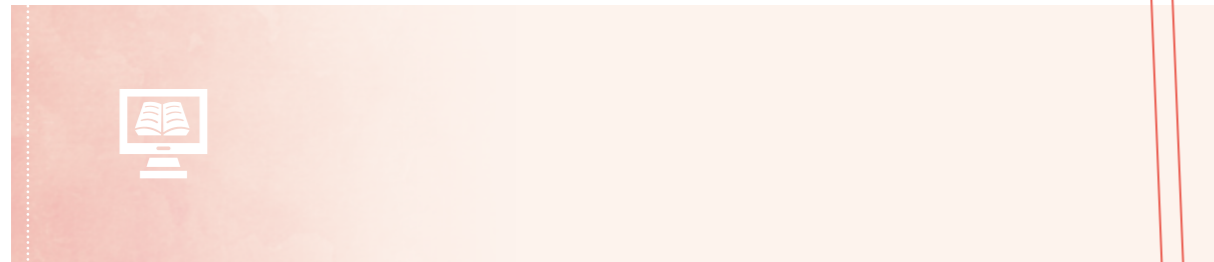
体面工作和
经济增长



2022 10 25



“ ”
“ ”
“ ”



101

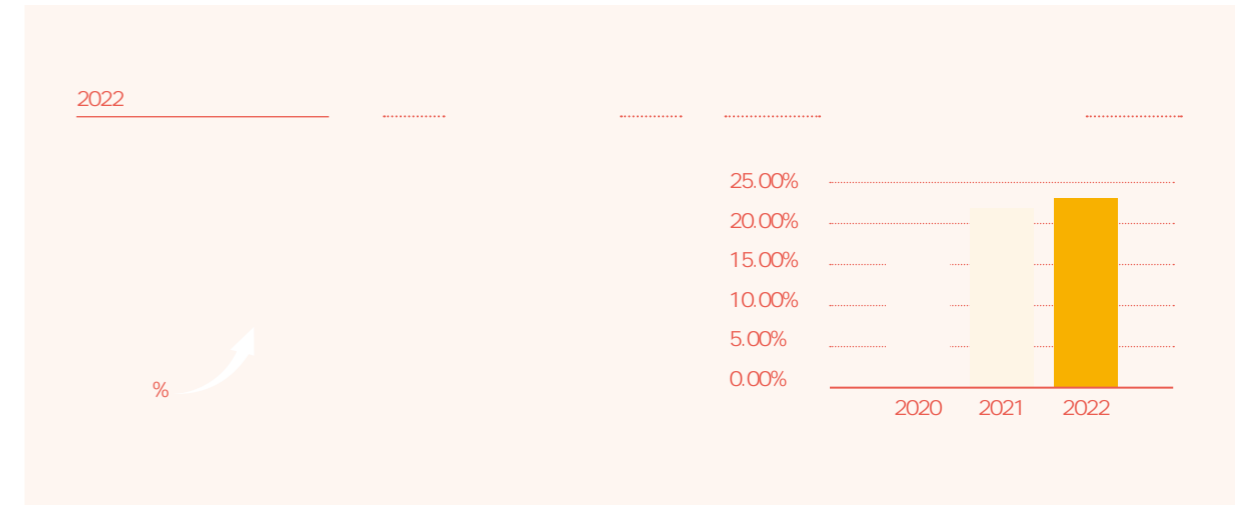
%

" 2022

" 2022

2022

56%



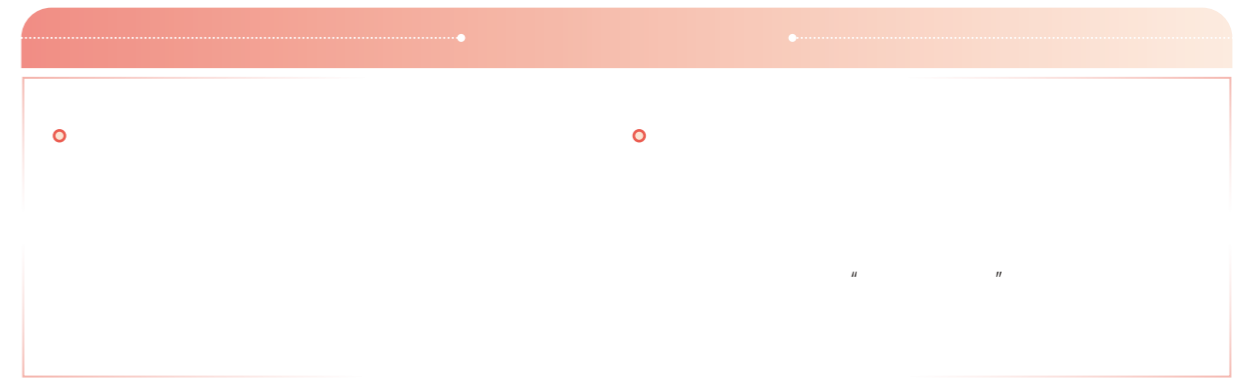
2022

-
-

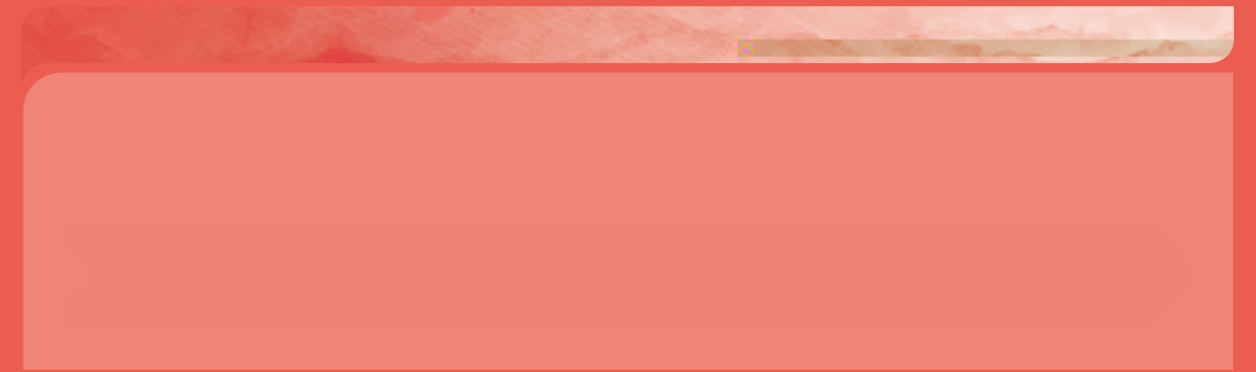
2022

" "

" " " "

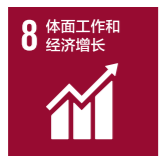


LAB





3 良好
健康与福祉

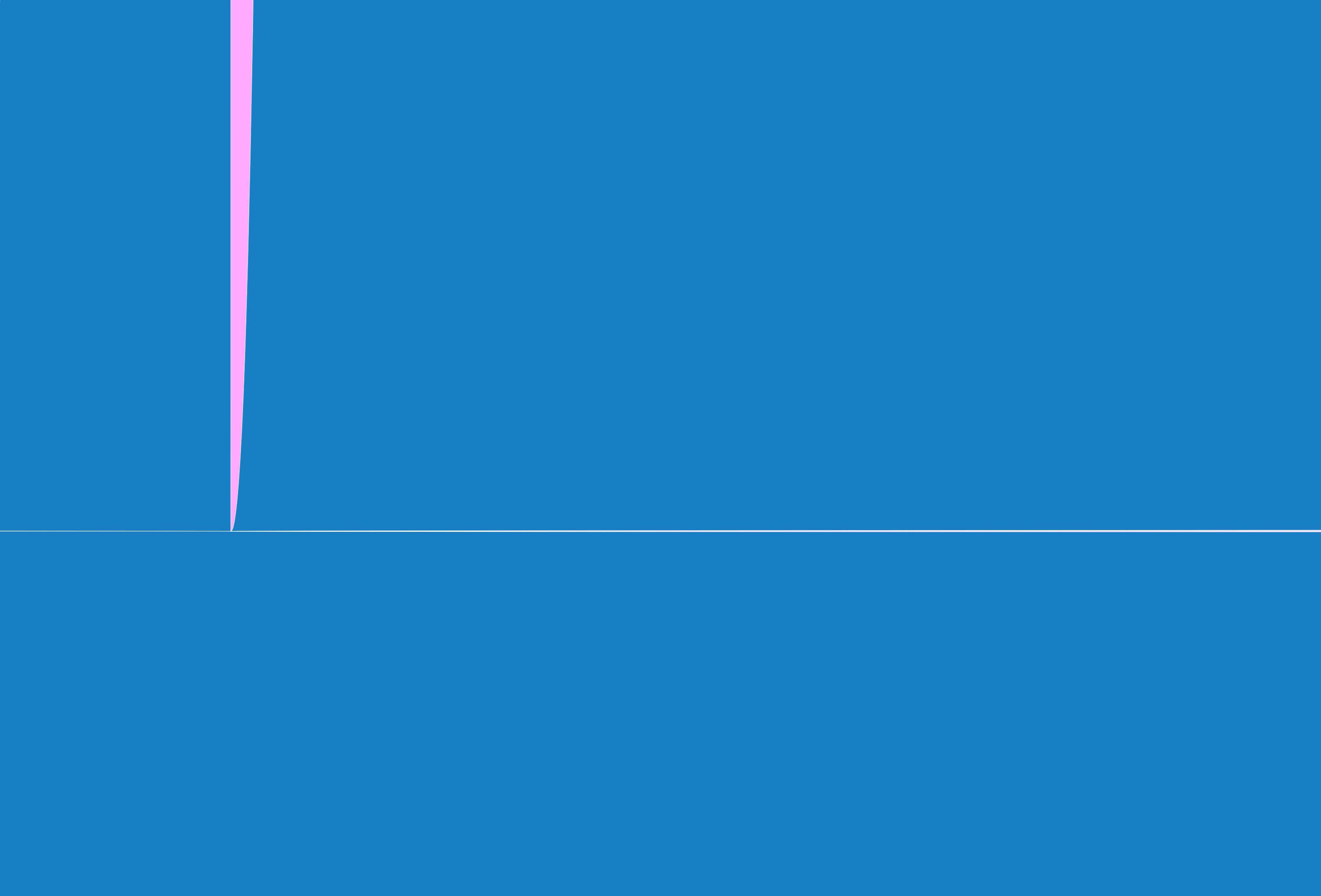


8 体面工作和
经济增长



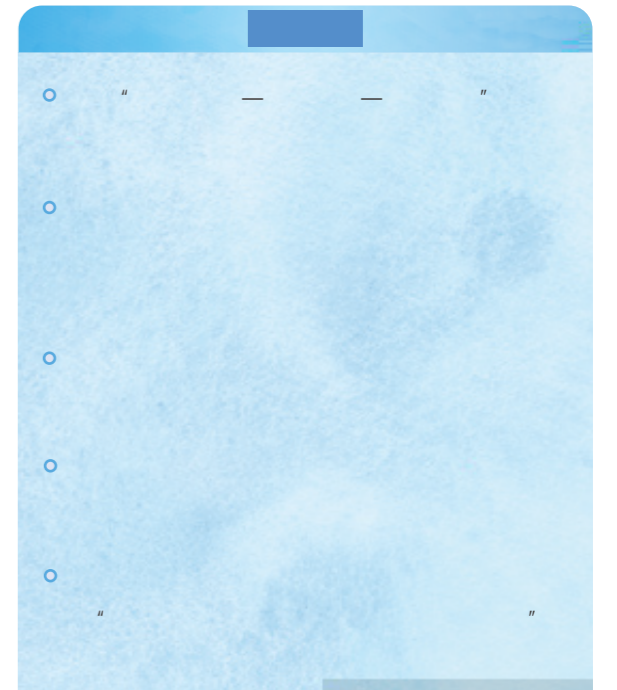
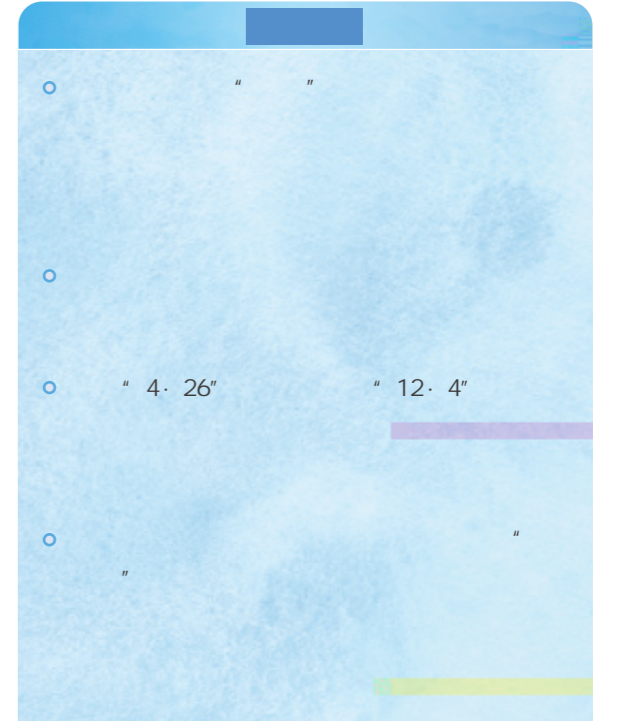
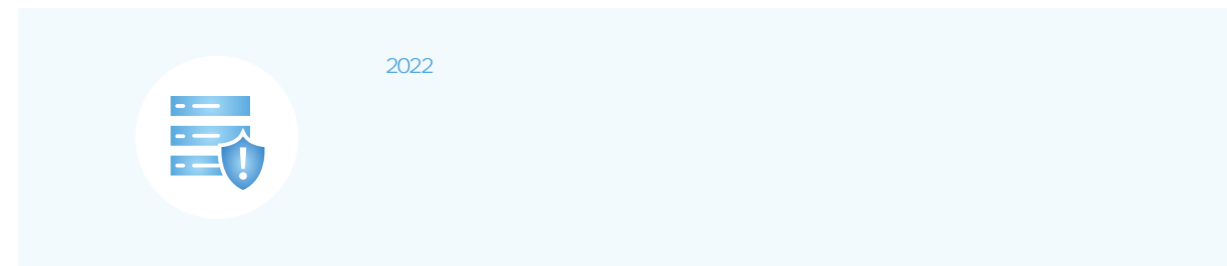
9 产业、创新和
基础





2022 " " " "

" "



•

“

”

TOD

“

+

”

+

+

+

”

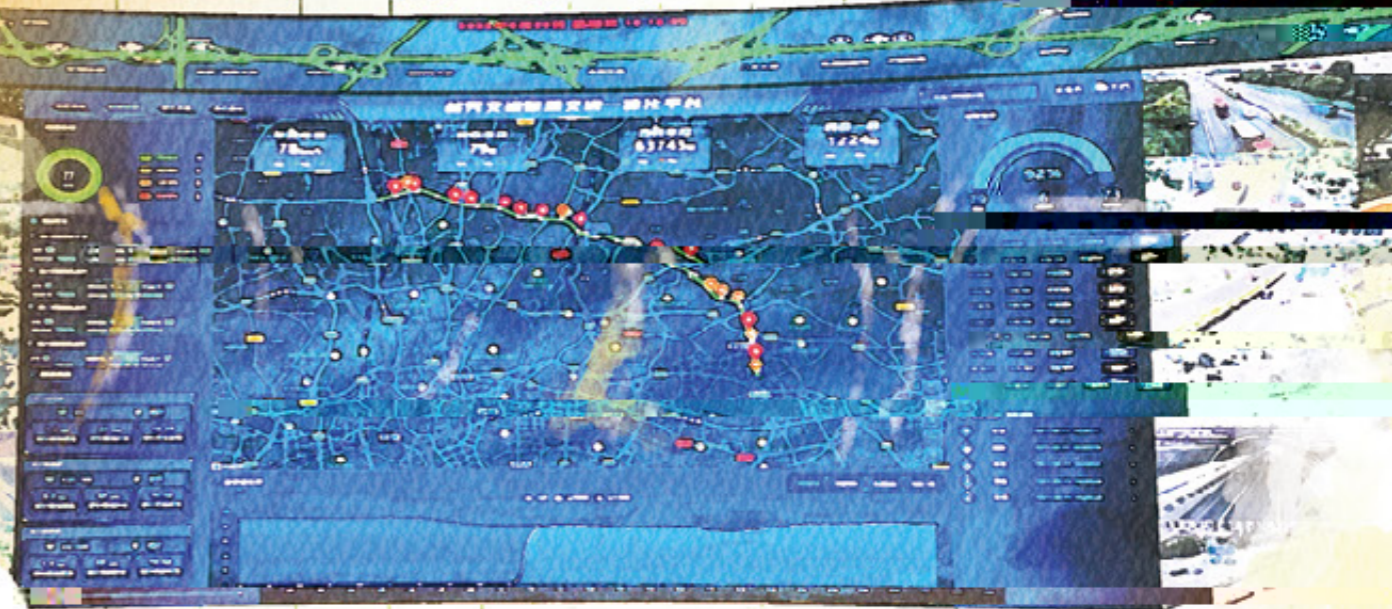
”

”

“

”

北二环智慧营运监控中心



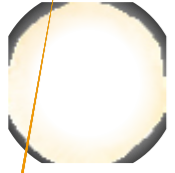
8 体面工作和
经济增长

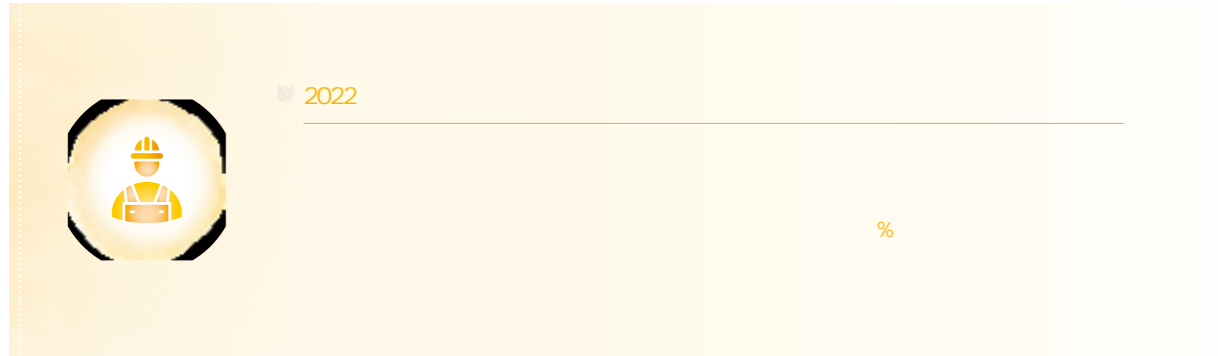


•

HSE

HSE

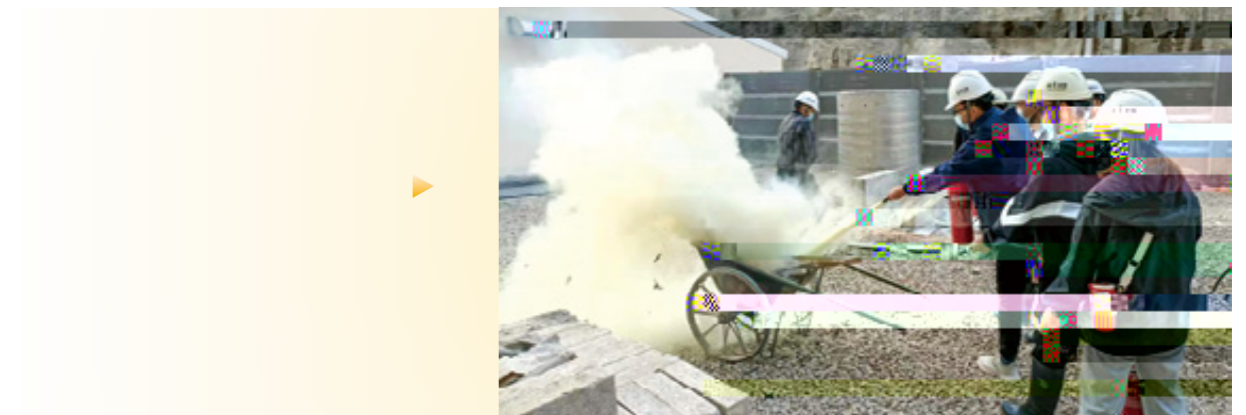
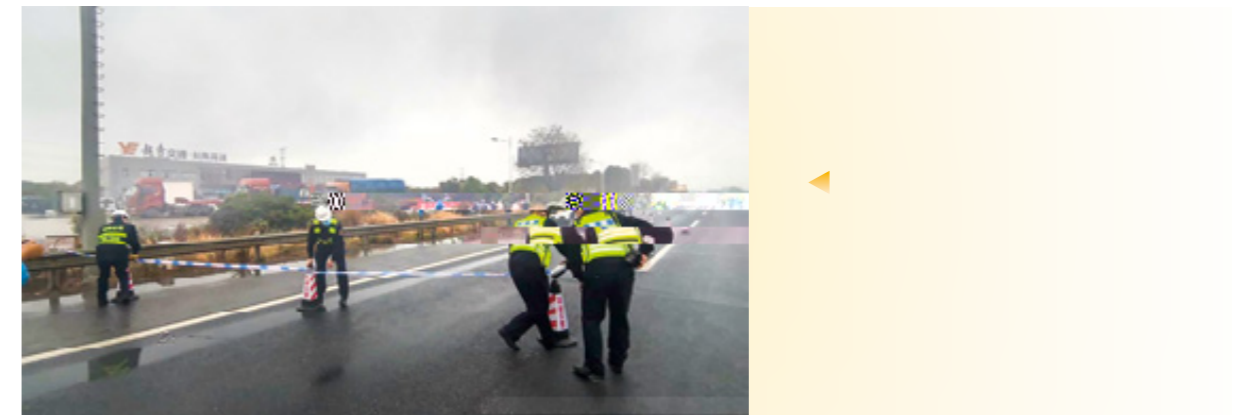
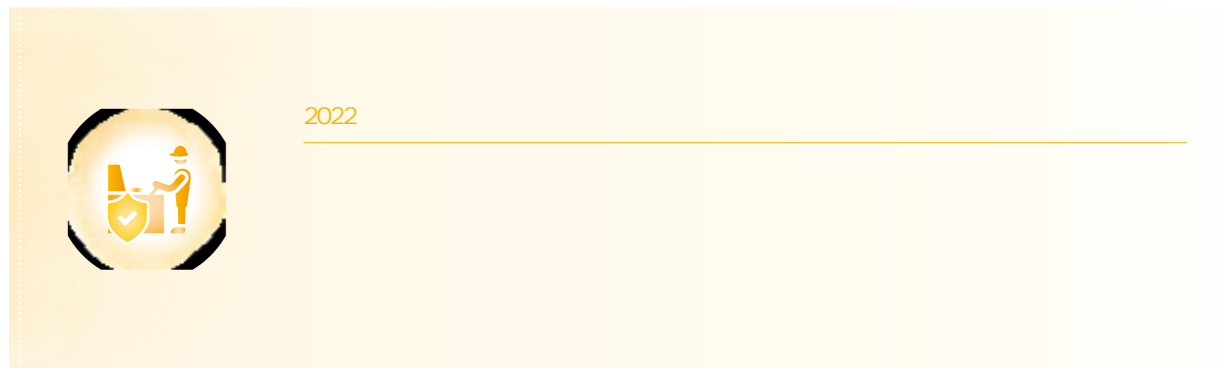




6

4

2022



•

“ ”

2022

“ ”

2022 3

100



2022 5

“ ”

100
40

2022 7

“ ” 2022

15 70

“ ” 2022



2022 8

“ ”

2022 9

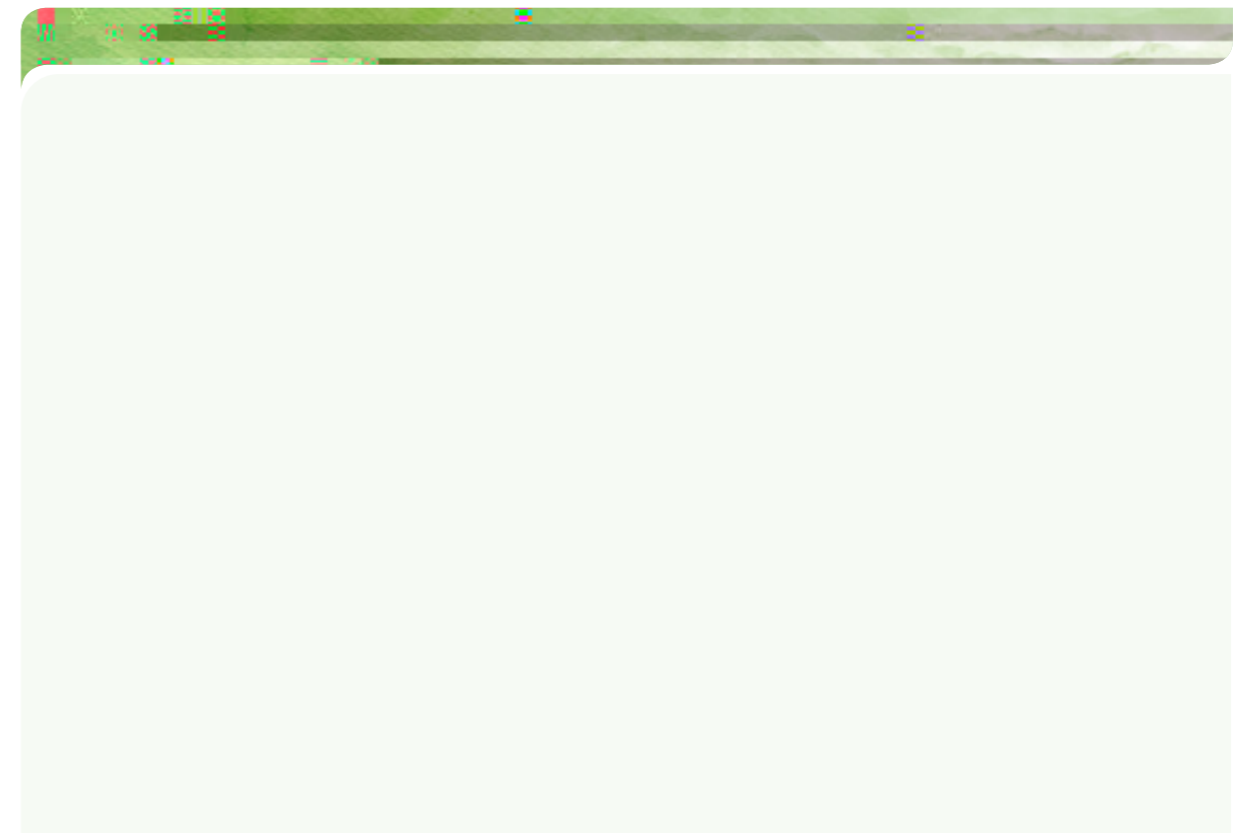


2022 11

“ ”

“ ”





•

" "

" "



- 2022
- 34
- 499.0
- 2021
- 113%
- " 2022
- TOP10* " 2022
- TOP10*
- 2022
- LEEDv4.1 O+MEB
- 4



-
-
-
-



-
-



-
-



- 2022
- 130th
- SNCR
- SCR
- 332.8
- 2022

" " " 3.0

ESG

" " 2022 16 2022

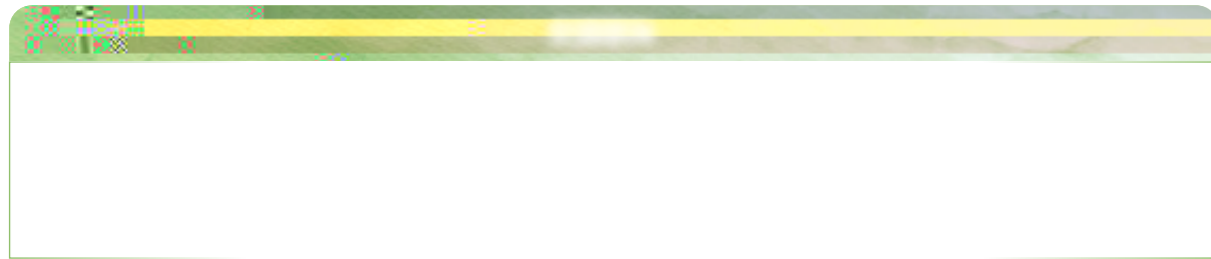
1,700 59

38.31 ABS


2022 151

3,000


2022 13



	2022	
	COD	159mg/L
L	133mg/L	
	34mg/L	18mg/L
BOD5	41.6mg/L	
18.3mg/L		
15%		





2022



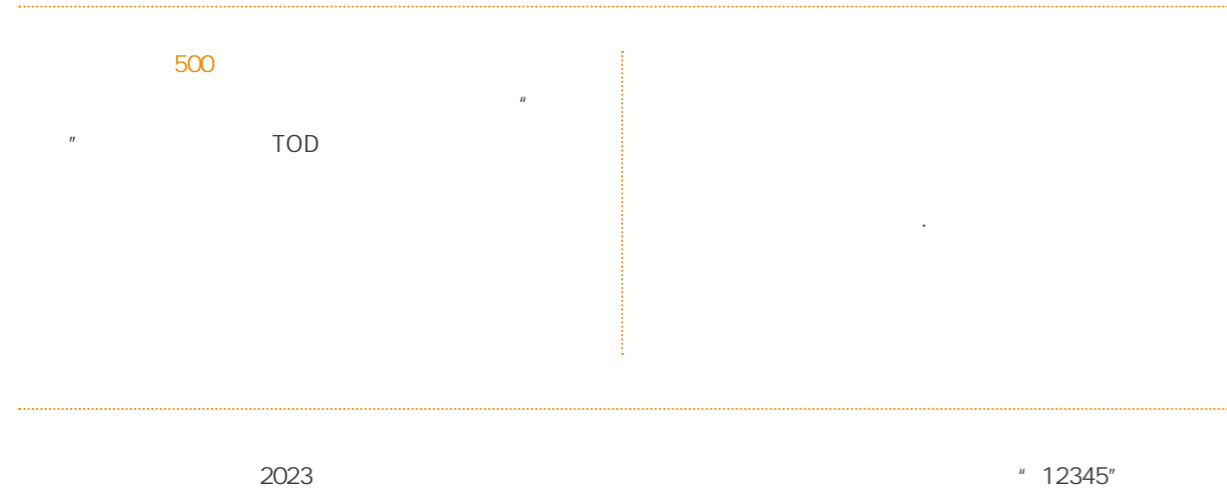
2022




2022

2023



		2020	2021	2022
	%	113.09	112.90	105.97
1		63425	75398	43867
		34	47	46
	%	99.4	99.4	99.4
	%	100	100	100
	%	100	100	100
	%	100	100	100
	%	100	100	100
	%	97	96	98
	%	96.6	95.7	97.0
	%	86.3	85.6	87.0
		13050	26850	18196
		1013	1024	854
		1292	1758	2319
		129	197	217
		226	273	281
	%	56.92	58.00	45.33
	%	73	81	75
	%	58.91	67.00	70.50
		29937	36837	38027
		18620	22832	23807
		11317	14005	14220
		1298	1751	1953
	%	16.7	22.2	23.53
		37	77	39
	%	3.60	4.22	5.42

	2020	2021	2022
	5.67	5.12	5.49
	16912	15525	17866
	/	2022	2164
	1602	1744	1651
	3700	3705	2734
	21.81	37.82	45.53
	48	56	53
	83	54	46
	17.3	16.8	18.7
	28.1	30.7	20.3
	%	100	100
	%	100	100
	%	100	100
	2.2	1.49	1.3
	25931	42148	54489
	%	96	95
	135047	74747	39456
	1654	2723	3705
	42485	63577	80551
	0	0	0
	0	0	0
	0	1	1
	0	0	0
	0	0	0
	967	4238	7647
	254	422	706
	50	100	217
	1277	1091	874
	1236	2400	3236

	2020	2021	2022
2	1439577	1718538	1811959
/	1.26	1.26	0.89
/	29.21	26.93	27.65
/	25.96	32.65	26.59
/	0.11	0.09	0.08
/	3367.93	3024.14	2426.61
	6.05	7.88	9.60
	193	319	362
3	743511	491469	506207
/	52.63	60.54	54.34
/	176	180	156
/	740.35	681.51	528.43
4	198828310	225850287	224679127
5	25825369	25182766	25049949
/	59.38	35.71	25.17
/	423.99	511.21	552.94
/	0.16	0.19	0.09
/	32366	33090	26784
	41564	44988	109175
	0	0	73000
	73478	164379	41502
	2007	5070	6660

- 1. 3
- 2. 3
- 3. 3
- 4. 3
- 5. 3

CASS-CSR4.0	GRI Standards
P1.1-1.3	102-1 102-50 102-51 102-52 102-53
P2.1-2.2	102-14 102-15 102-23
P3.1 P4.1-4.4 G1.1-1.2 G2.1-2.3 G3.1-3.3 G4.1 G5.1 G6.1 M1.2 M1.4 S4.1	102-2 102-3 102-4 102-5 102- 6 102-7 102-16 102-18 102-29 102-31 102-32 102-33 102-34 102-40 102-42 102-44 102-47
P3.2 S1.5 S4.12-4.14	201-1 203-1 203-2
M2.1-2.2 M2.14-2.15 S1.3 S1.5-1.6 S2.1-2.8 S2.10- 2.14 S2.16 S4.2	102-8 201-1 403-1 403-4 403-5 403-6 404-2 405-1
M1.1 M1.5-1.8 M2.11 M2.13 M3.1 M3.3 M3.5 M3.8 M3.11 S1.1-1.2 S1.4 S3.1-3.5	102-9 203-1 203-2 205-2 417-1 418-1
M1.3 M2.4 M3.4 M3.6- 3.7	203-1 203-2 205-2 404-2
S2.17-2.18 S4.6-4.11 E1.1 E1.3 E1.5 E1.7 E1.9 E2.1-2.3 E2.6 E2.8 E2.11 E2.13 E2.15 E2.17 E2.19 E3.1-3.4 E3.6	301-2 301-3 302-5 303-3 304-2 306-2 401-2
A1	103-2
A2 M2.3 M2.5-2.6 M2.16 M2.18	302-1 302-2 302-3 302-4 303-1 305-1 305-2 305-4 305-7 401-1 403-9 404-1
A5	102-55
A4	102-56
A6	



